

Estonia s operating new energy stations





Overview

Amidst geopolitical tensions, Estonia took decisive action to reduce its reliance on Russian energy sources, particularly in response to Russia's invasion of Ukraine. Previously heavily dependent on Russian imports for natural gas and oil products, Estonia ceased importing Russian pipeline gas in April 2022 and implemented a ban on all imports and purchases of Russian natural gas, including (LNG), in September 2022. In December 2022, Estonia further rei.

Tallinn is set to open its first hydrogen refueling stations by the end of summer, marking a significant milestone in Estonia's transition to cleaner transport solutions. Fuel retailer Alexela and energy company Utilitas are developing two new facilities in the capital's Lasnamäe district. Does Estonia need a new LNG terminal?

To address its energy needs, Estonia now relies on pipeline connections to LNG terminals in Klaipeda, Lithuania, and the new Inkoo LNG terminal in Finland. Eesti Gaas, the main gas supplier, has secured deals to bring LNG cargoes from these terminals by autumn 2023.

What is Estonia's energy demand?

Estonia energy demand is satisfied through domestic production (70 percent) and imported supplies, mainly natural gas and both gasoline and diesel oil (30 percent). Estonia already fulfilled the target of 25 percent of Renewable Energy Sources (RES) in gross final energy consumption set by the National Renewable Energy Action Plan.

What is the main source of energy in Estonia?

In 2014 Estonia's primary energy production exceeded 244 thousand TJ with over 77 percent produced from shale oil and 18 percent from wood. Estonia energy demand is satisfied through domestic production (70 percent) and imported supplies, mainly natural gas and both gasoline and diesel oil (30 percent).

Why did Estonia stop relying on Russian energy sources in 2022?

In response to geopolitical tensions, Estonia reduced its reliance on Russian



energy sources by halting imports of Russian pipeline gas in April 2022 and banning all Russian natural gas and oil product imports, including LNG, by September 2022.

What percentage of Estonia's energy supply is renewable?

According to the International Renewable Energy Agency (IRENA), in 2020, renewable energy accounted for 32% of Estonia's Total Energy Supply (TES). The composition of this renewable energy mix was heavily dominated by bioenergy, which represented 93% of renewables.

How much electricity does Estonia produce?

Estonia has an electric power plant capacity of 2,722 MWe. The great bulk of the electricity is currently produced by Eesti Energia, the state-owned electric company. In 1996 Eesti Energia produced 8,967 GWh of electricity, of which 5,528 GWh was used domestically and 1,100 GWh was exported.



Estonia s operating new energy stations



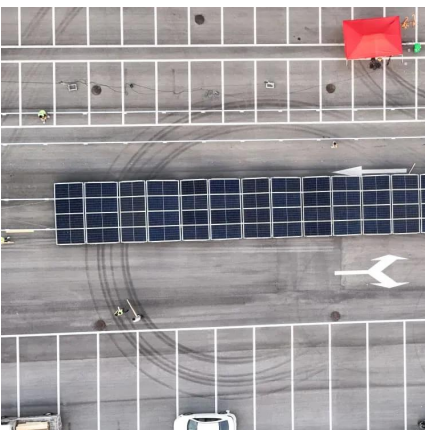
Energy in Estonia

OverviewEnergy securityEnergy plan and targetsEnergy typesElectricityTransport sector

Amidst geopolitical tensions, Estonia took decisive action to reduce its reliance on Russian energy sources, particularly in response to Russia's invasion of Ukraine. Previously heavily dependent on Russian imports for natural gas and oil products, Estonia ceased importing Russian pipeline gas in April 2022 and implemented a ban on all imports and purchases of Russian natural gas, including liquefied natural gas (LNG), in September 2022. In December 2022, Estonia further rei...

[Hydrogen filling stations in Tallinn set to be operational by end of](#)

The facilities are being built by fuel retailer Alexela and energy company Utilitas, backed by EUR5 million in state support, and are also intended as a test bed for hydrogen's future ...



[Energy's First PV Power Plant in Estonia is Now Operational](#)

Tallinn/ Vienna, 3 rd October 2023 - Energy, a leading renewable energy provider operating in Central & Eastern Europe, is proud to announce the inauguration of its first photovoltaic (PV) ...



Contact Us

For catalog requests, pricing, or partnerships, please visit:
<https://www.legnano.eu>